

ACP Programming Application User Guide | Touchscreen Ovens

Use the ACP Programming Application to create and organize menu item information from your computer.



ACP Programming App version is subject to change.

Please use most recent release when available.

For best results, use in conjunction with the latest oven firmware.

To download firmware updates and installation instructions, please visit acpsolutions.com/oven-programming/.

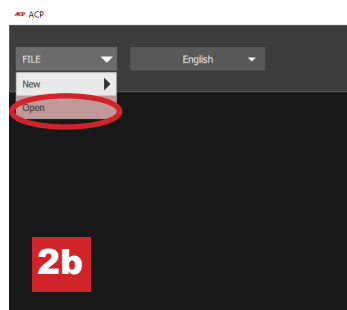
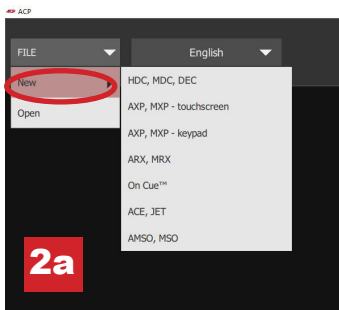


Download and Install:

1. Open an internet browser and go to acpsolutions.com/oven-programming/.
2. Select the appropriate ACP Programming Application download. (*Windows Download* or *Mac OS Download*) Your download will begin.
3. Open and install the downloaded ACP Programming Application:
 - **Windows:**
 - i. Locate the downloaded file.
 - ii. Click to launch the extracted file.
 - iii. Follow prompts to install the application in your C:\Program Files folder
 - **Mac OS:**
 - i. Locate the downloaded file.
 - ii. Drag and drop the file into your Applications folder
 - iii. Follow prompts to install the application

Getting Started:

1. Launch the application
 - **Windows:** Open “ACP Remote Programming Interface” from your Program Files, or the Start Menu shortcut
 - **Mac OS:** Open the “ACP_Application.app” file
2. Start a New menu from scratch (a), or Open an existing menu (b):
 - a. **Create New Menu:**
 - i. Click “File”, then “New.”
 - ii. Select the appropriate model
 - b. **Open Existing Menu:**
 - i. Select “File,” then “Open.”
 - ii. Navigate to the location of your menu file and open it.



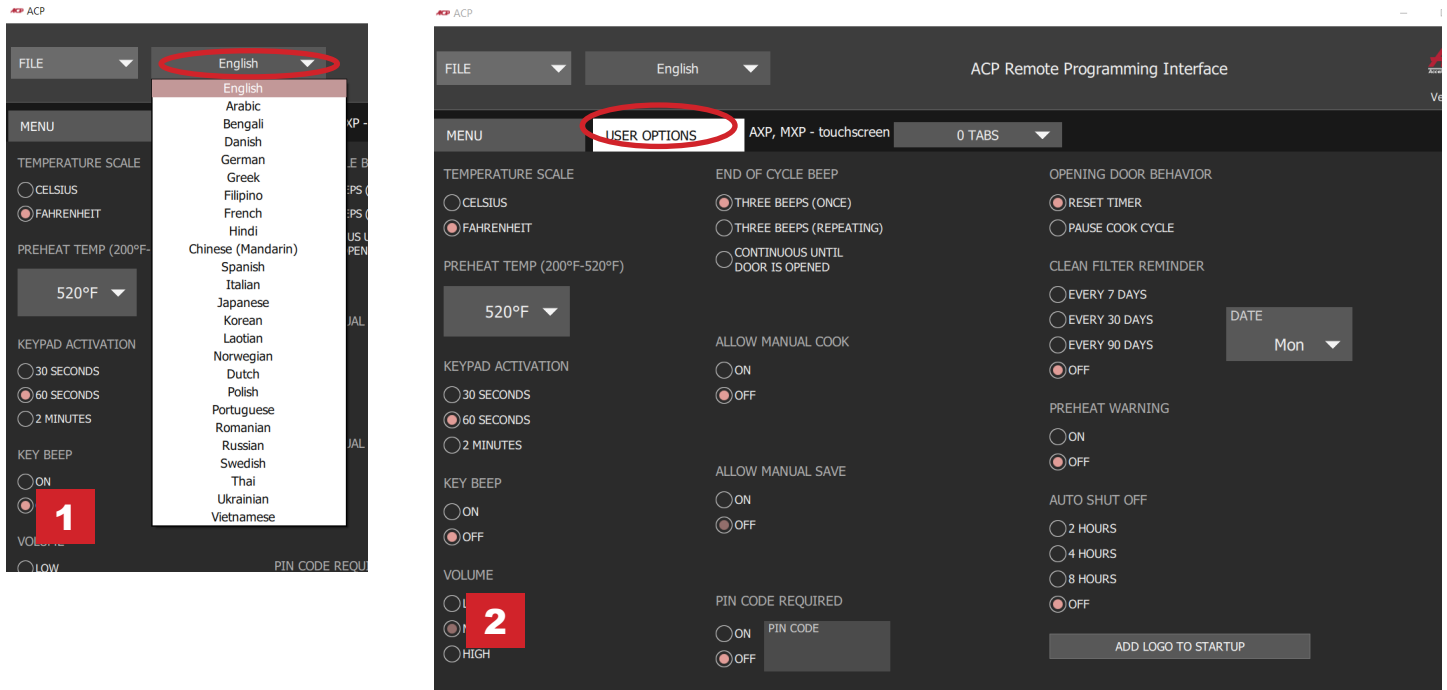
Change User Options:

1. To change the default language, select from options in the top-right drop down menu.
2. Click on the *User Options* tab to access a variety of customizable settings.

Note: The temperature set in the User Options section will be the default when creating a new menu item

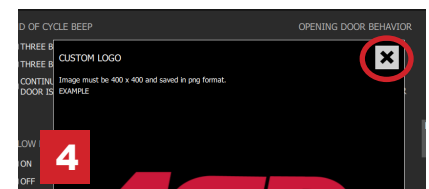
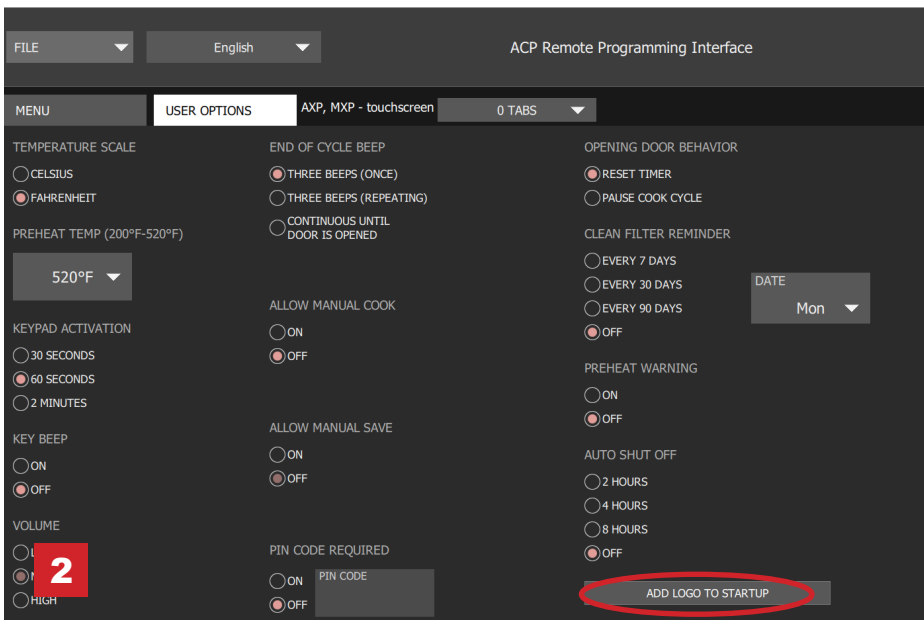
Note: The default logo for the standby screen is the ACP, Inc. logo. Customize it and add your own logo by selecting the "Add Logo to Startup" button.

Note: If "PIN code required" option is enabled, the chosen PIN must be a 4-digit numeric PIN.



Customize Startup Screen Logo

1. Resize desired image to **400 x 400 pixels** and save in **PNG** format.
2. In the *User Options* tab, click **Add Logo to Startup**
3. Click on the folder icon and navigate to the location of the image. Select Open.
4. Close "Custom Logo" window to save changes.



Organizing Menus:

You may add and organize recipe information by creating new recipes, folders and tabs. See the following pages for more information.

Content Example:

Tab 1: Lunch Menu

Folder A: Sandwiches

Recipe 1: Reuben Panini

Recipe 2: Muffuletta Panini

Folder B: Sides

Recipe 1: Fries

Recipe 2: Roasted Veggies

Tab 2: Dinner Menu

Folder A: Pizza

Recipe 1: Pepperoni Pizza

Recipe 2: Cheese Pizza

Folder B: Seafood

Recipe 1: Salmon

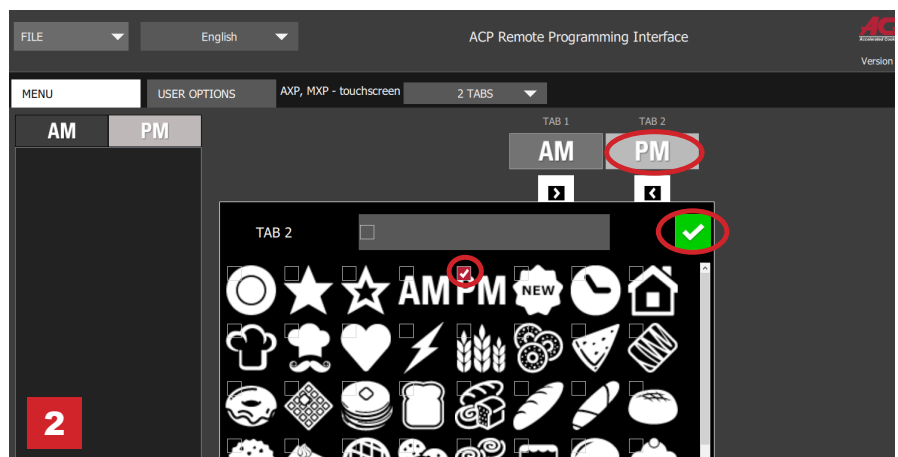
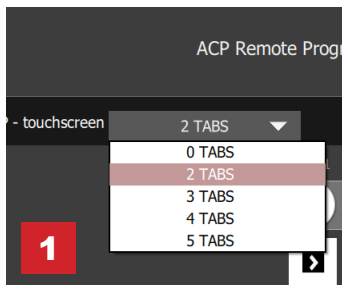
Recipe 2: Shrimp



To download and view example menus, please visit acpsolutions.com/oven-programming/#menu-examples

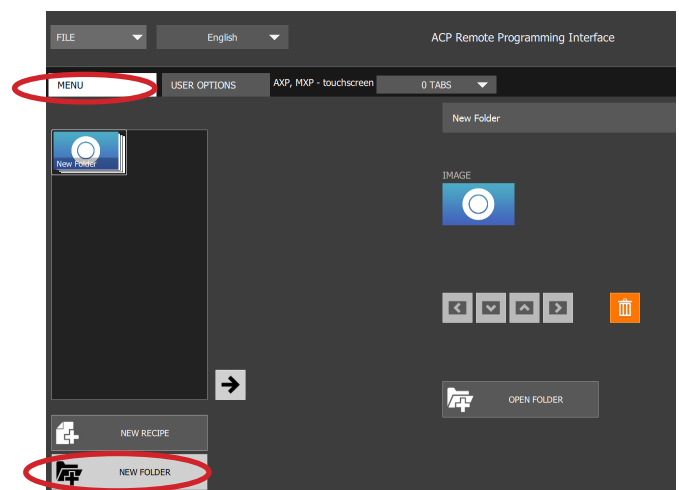
Create a New Recipe Tab

1. Click on the *Tabs* drop down menu and select the number of tabs desired.
2. To customize each tab appearance, click on the tab.
3. Select one of the following options:
 - a. Type your **custom text** or
 - b. Select an **icon**
4. Select the green check mark to save.



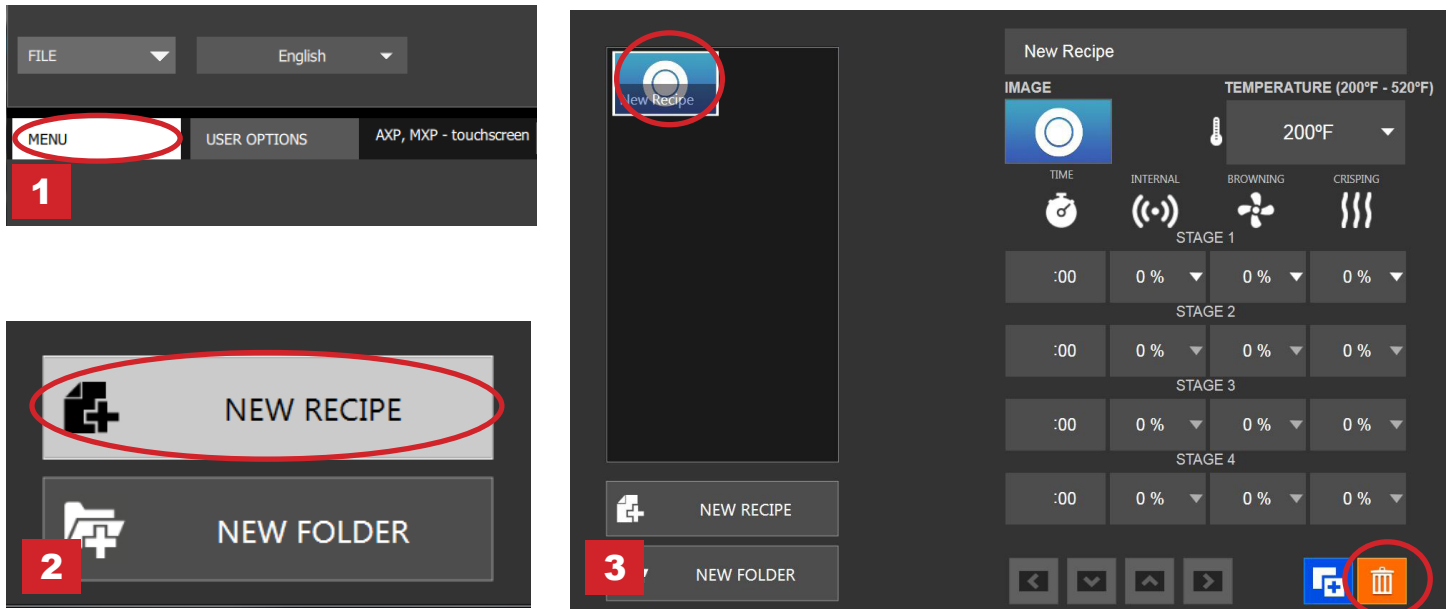
Create a New Recipe Folder

1. Select the *Menu* tab.
2. Click on **New Folder**
3. Edit folder name and appearance in the panel on the right. To delete a folder, click the orange trash can icon.
4. Drag and drop recipes into folder. Double click on the folder icon to access the contents.



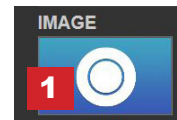
Create a New Recipe:

1. Select the *Menu* tab.
2. Click on **New Recipe**
3. Edit recipe name, settings, and appearance in the panel on the right.
To delete a recipe, click the orange trash can icon.



Customize Recipe and Folder Images

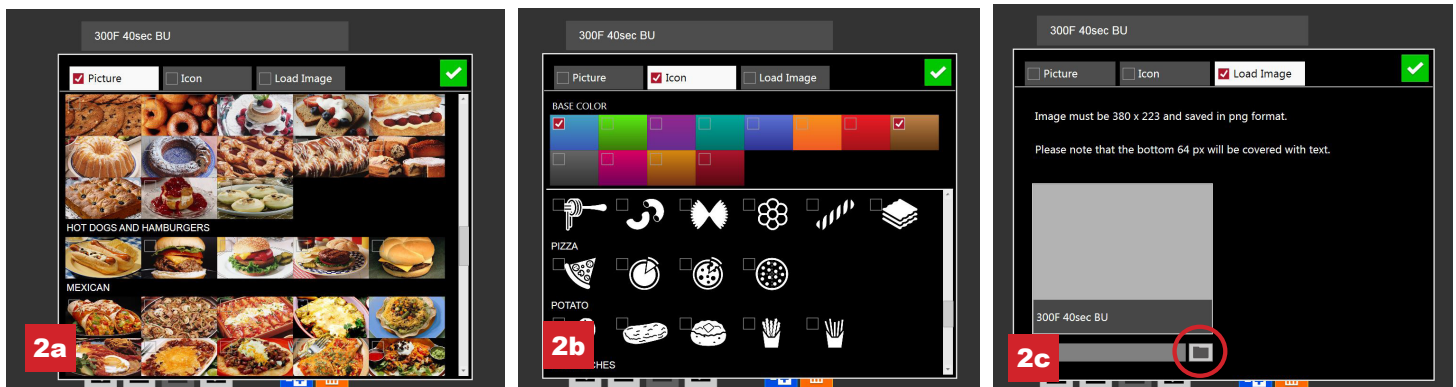
1. Click on the image icon to choose an image for the recipe or folder.
2. Select one of the following options:
 - a. **"Pictures"** tab to view and select from an assortment of stock images.
 - b. **"Icons"** tab view and select from an assortment from graphic icons
 - c. **"Load Image"** tab to upload a custom image for the recipe.



Load an Image*:

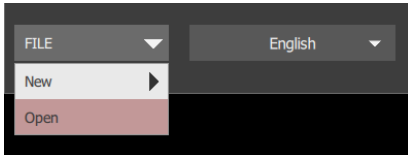
1. Resize desired image to **380 x 223 pixels** and save as **PNG** format.
Please note that the bottom 64 pixels will be covered by text.
2. Select the folder icon to upload the custom image. (see figure 2c below)
3. Navigate to the location of the image and select "Open."
4. Select the green check mark to save.

**For custom image uploads only*

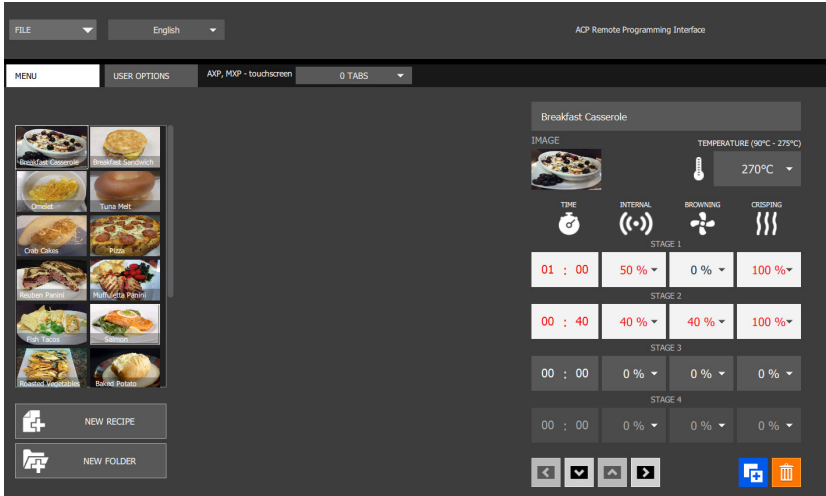


Edit an Existing Recipe

1. Open the ACP Programming Application from your computer.
2. Select "File," then "Open." Navigate to the location of your menu file and open it.



3. Double-click to open the folder containing the recipe.
4. Click on a recipe to edit the recipe name, image or cook settings.
5. To delete a recipe, select the orange garbage can icon.
6. To save changes and create a new updated file, select "File" then "Save As."

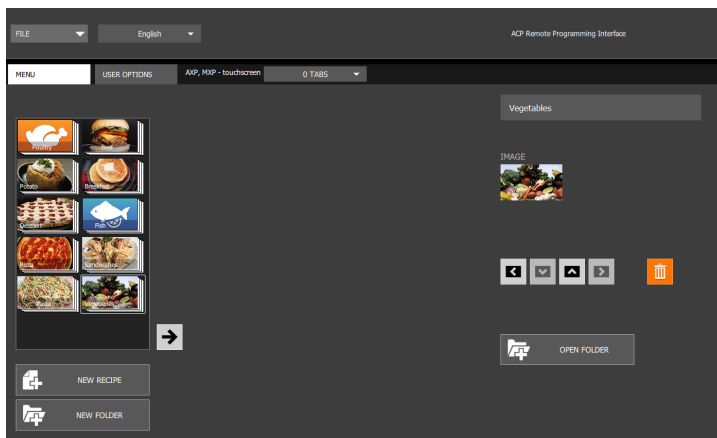


Edit an Existing Folder

1. Select "File," then "Open." Navigate to the location of your menu file and open it.



2. Click on the folder to edit the color, icon, image, name, etc.
3. To delete a folder, select the orange garbage can icon.
4. To save changes and create a new updated file, select "File" then "Save As."



Save Menu Information

For touchscreen models, files may be transferred via USB, WiFi or Ethernet connection. See below for best practices for each method of transfer:

USB

1. Select "File", then "Save As."
2. Navigate to the USB flash drive.
3. Specify a File Name for the new menu. Click "Save."

Note: Files must be saved to the root directory of USB flash drive (cannot be saved inside another folder).

WiFi or Ethernet

1. Select "File", then "Save As."
2. Navigate to desired location.
3. Specify a File Name for the new menu. Click "Save."

Understanding Menu File Formats

		LEGACY VERSION	IMPROVED VERSION														
ACP Programming App Version		Windows: Desktop Release 34 Mac OS: MAC_release10_04_2016	Windows: 2017.08.22 Mac OS: 2017.08.22														
Compatible Oven Firmware		Versions ≤ 3.1.0	Versions > 3.1.1														
Saved/Exported Menu File Format		<table border="1"> <thead> <tr> <th>Name</th> <th>Type</th> </tr> </thead> <tbody> <tr> <td>Images</td> <td>File folder</td> </tr> <tr> <td>OldMenu.xml</td> <td>XML Document</td> </tr> <tr> <td>OldMenu.zip</td> <td>zip Archive</td> </tr> </tbody> </table>	Name	Type	Images	File folder	OldMenu.xml	XML Document	OldMenu.zip	zip Archive	<table border="1"> <thead> <tr> <th>Name</th> <th>Type</th> </tr> </thead> <tbody> <tr> <td>NewMenu.mxp</td> <td>MXP File</td> </tr> </tbody> </table>	Name	Type	NewMenu.mxp	MXP File		
Name	Type																
Images	File folder																
OldMenu.xml	XML Document																
OldMenu.zip	zip Archive																
Name	Type																
NewMenu.mxp	MXP File																
Readable Menu File Format	Via USB Flash Drive	<table border="1"> <thead> <tr> <th>Name</th> <th>Type</th> </tr> </thead> <tbody> <tr> <td>Images</td> <td>File folder</td> </tr> <tr> <td>OldMenu.xml</td> <td>XML Document</td> </tr> </tbody> </table>	Name	Type	Images	File folder	OldMenu.xml	XML Document	<table border="1"> <tbody> <tr> <td>NewMenu.mxp</td> <td>MXP File</td> </tr> <tr> <td colspan="2">or</td> </tr> <tr> <td>Images</td> <td>File folder</td> </tr> <tr> <td>OldMenu.xml</td> <td>XML Document</td> </tr> </tbody> </table>	NewMenu.mxp	MXP File	or		Images	File folder	OldMenu.xml	XML Document
	Name	Type															
Images	File folder																
OldMenu.xml	XML Document																
NewMenu.mxp	MXP File																
or																	
Images	File folder																
OldMenu.xml	XML Document																
	Via WiFi/Ethernet	<table border="1"> <tbody> <tr> <td>OldMenu.zip</td> <td>zip Archive</td> </tr> </tbody> </table>	OldMenu.zip	zip Archive	<table border="1"> <tbody> <tr> <td>NewMenu.mxp</td> <td>MXP File</td> </tr> <tr> <td colspan="2">or</td> </tr> <tr> <td>OldMenu.zip</td> <td>zip Archive</td> </tr> </tbody> </table>	NewMenu.mxp	MXP File	or		OldMenu.zip	zip Archive						
OldMenu.zip	zip Archive																
NewMenu.mxp	MXP File																
or																	
OldMenu.zip	zip Archive																

Do you have a .mxp menu file which you'd like to load onto an oven with an older firmware version?

- **ACP strongly recommends updating the oven to the latest and greatest version of firmware.** Visit acpsolutions.com/oven-programming/ to learn more and download .
- If you choose to continue using the older version of firmware, you may revert .mxp files to the legacy format using the following method:
 1. Rename the .mxp file: replace ".mxp" file extension with ".zip"
 2. Extract or unzip the renamed file

